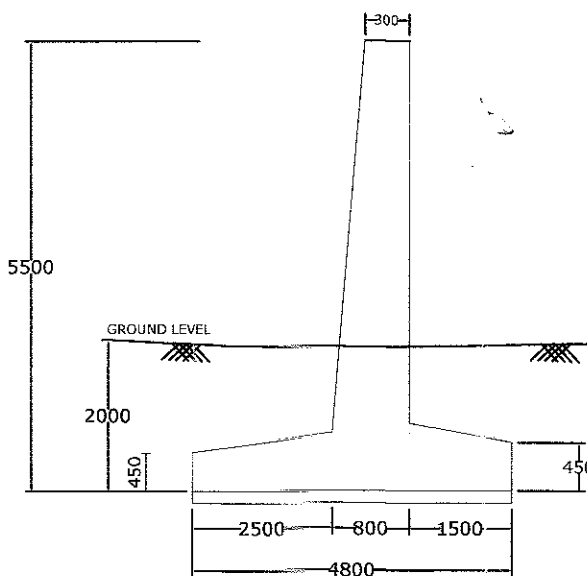
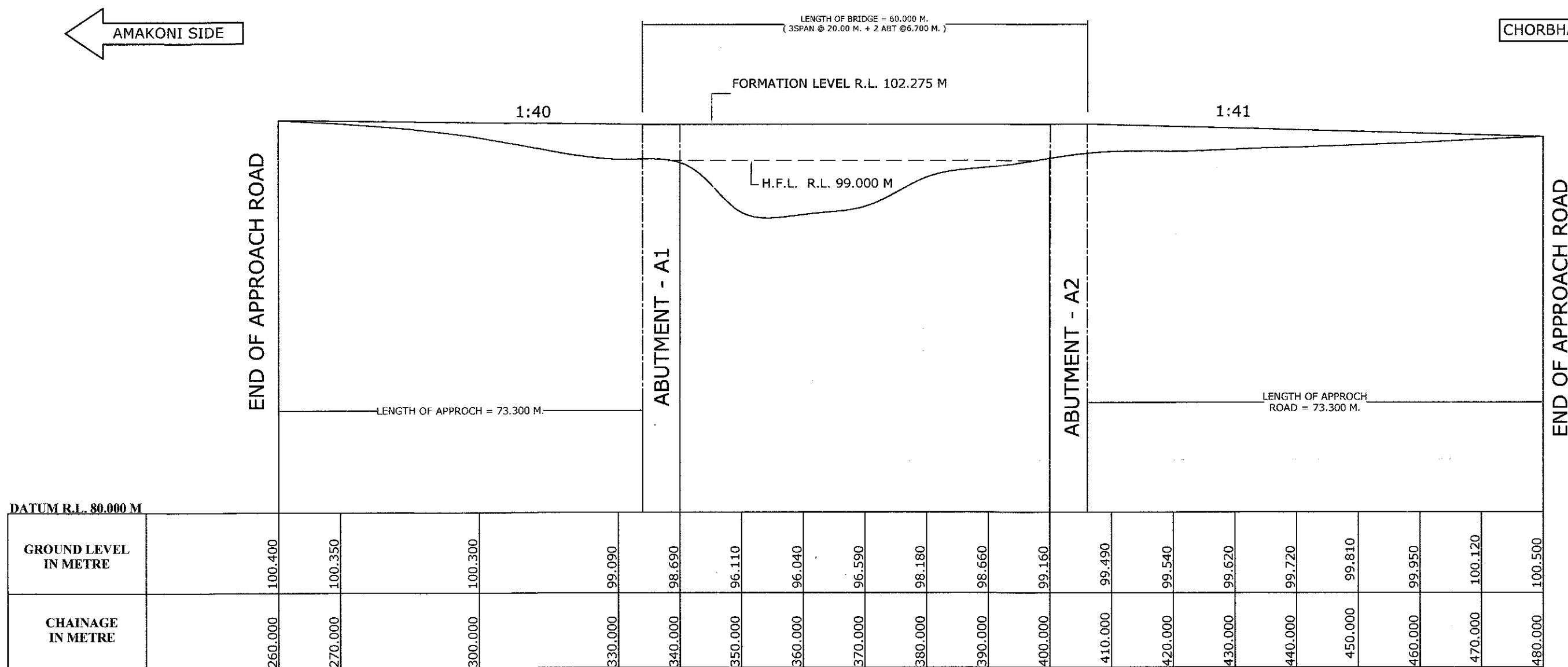
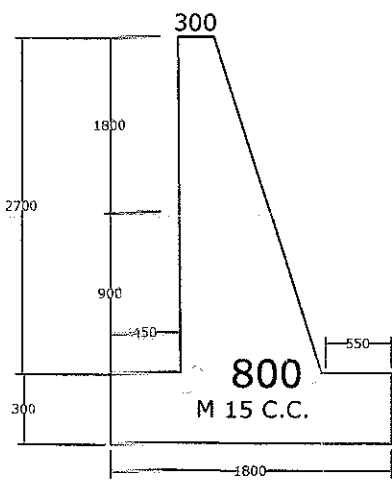


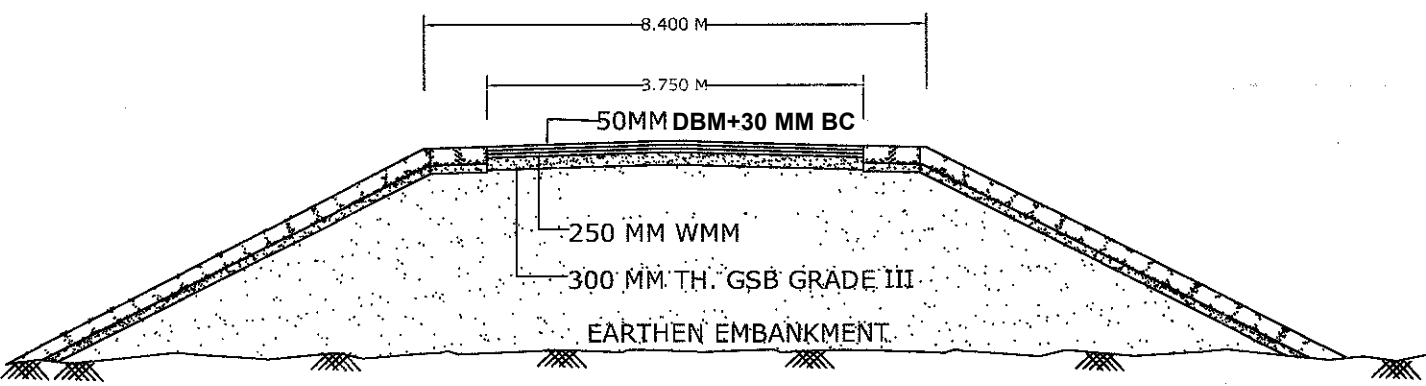
CONSTRUCTION OF HIGH LEVEL BRIDGE ACROOS PHOOLDORAGI NALLA ON AMAKONI - CHORBHATTI ROAD (KM 29/4) .



(A) RETAINING WALL HEIGHT 5.50 M. AND VARIE AS PER FORMATION LEVEL.
(I) CH. 333.300 M. TO CH. 320.000M. AMAKONI SIDE (BOTH SIDE).
(II) CH. 406.70M TO CH 430.000 M CHORBHATTI SIDE (BOTH SIDE).

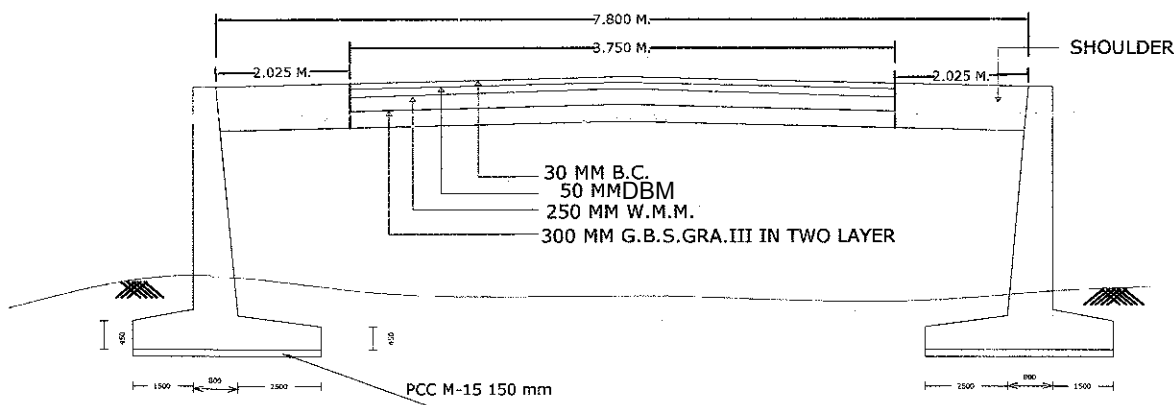


(B) P.C.C. TOE WALL -
(I) CH. 320.000 M. TO CH. 300.000M. AMAKONI SIDE (BOTH SIDE).
(II) CH. 430.000 M TO CH 460.000 M CHORBHATTI SIDE (BOTH SIDE).



TYPICAL CROSS SECTION OF ROAD IN FILLING

NOTE - 1.) WIDTH OF CRUST 3.750 M.



S/E	S.D.O.	E.E.
OFFICE OF THE EXECUTIVE ENGINEER P.W.D. BRIDGE CONSTRUCTION DIVISION, RAIPUR, (C.G.)		
PROJECT	CONSTRUCTION OF BRIDGE ACROSS PHOOLDORAGI NALLA ON AMAKONI - CHORBHATTI ROAD (KM 29/4).	
DRAWN BY:-	TITLE :-	L - SECTION OF APPROACH ROAD
	DRG NO. :-	DATE :-